



Role of MIDC in Industrial Development



//उद्यमात सकल समृद्धिः//

MIDC

**Maharashtra
Industrial
Development
Corporation (MIDC)**

About MIDC

- Maharashtra Industrial Development Corporation (MIDC) is a state-owned enterprise in Maharashtra, India.
- It was established in 1962 under the MIDC Act, 1961.
- MIDC is responsible for promoting industrial development in Maharashtra by providing infrastructure such as land, roads, water supply, power supply, drainage facilities, and street lights.
- MIDC has over 289 industrial areas in operation and is one of the largest industrial land bank owners in the country.
- MIDC has played a significant role in the industrial development of Maharashtra and has helped to create millions of jobs.

ABOUT MAHARASHTRA



Largest GDP

Maharashtra's GDP size is \$402 billion; accounting for 14% of India's GDP.



Largest Share in FDI

Attracted USD 20 Bn FDI in 2019-2020; accounting for 28% of India's share.



Highest Per Capita Income State

\$2,900 in 2019-20



Leader in Manufacturing

Maharashtra contributes to 15% of the industrial output in India.



Leader in Exports

Maharashtra has the highest value of exports; accounting for 20% of India's exports



Mature Infrastructure

5 International & 13 domestic airports, 2 major & 53 minor ports, and largest power capacity



Growing Digitization

Largest base of internet subscribers in India at 97 million. 133 million telecom subscribers.



Best Colleges in India

One of the leading states with 991 Engineering and Management Colleges and 958 IITs



Best Quality Workforce

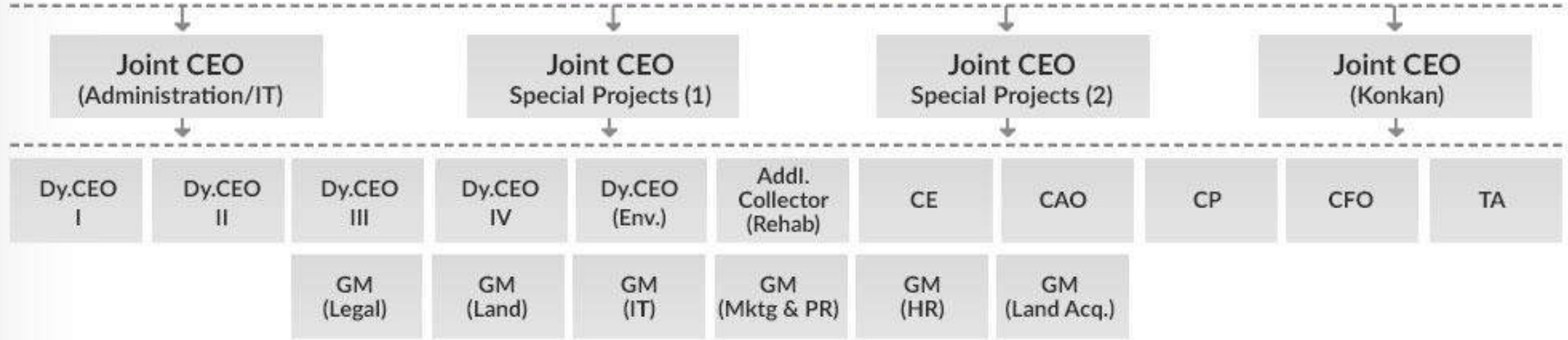
Maharashtra has the highest employable talent in India at 68%.

History of MIDC

- 1958: The idea of setting up MIDC is mooted by Late. Yashwantrao Chavan.
- 1961: MIDC Act is passed by the Maharashtra legislature.
- 1962: MIDC is established.
- 1963: First industrial area “Wagle Estate” is developed in Thane.
- 1970s: MIDC expands its operations to other parts of Maharashtra.
- 1980s: MIDC becomes one of the leading industrial development corporations in India.
- 1990s: MIDC focuses on developing infrastructure for export-oriented industries.
- 2000s: MIDC adopts a more sustainable approach to industrial development.
- 2010s: MIDC becomes a nodal agency for investment promotion in Maharashtra.

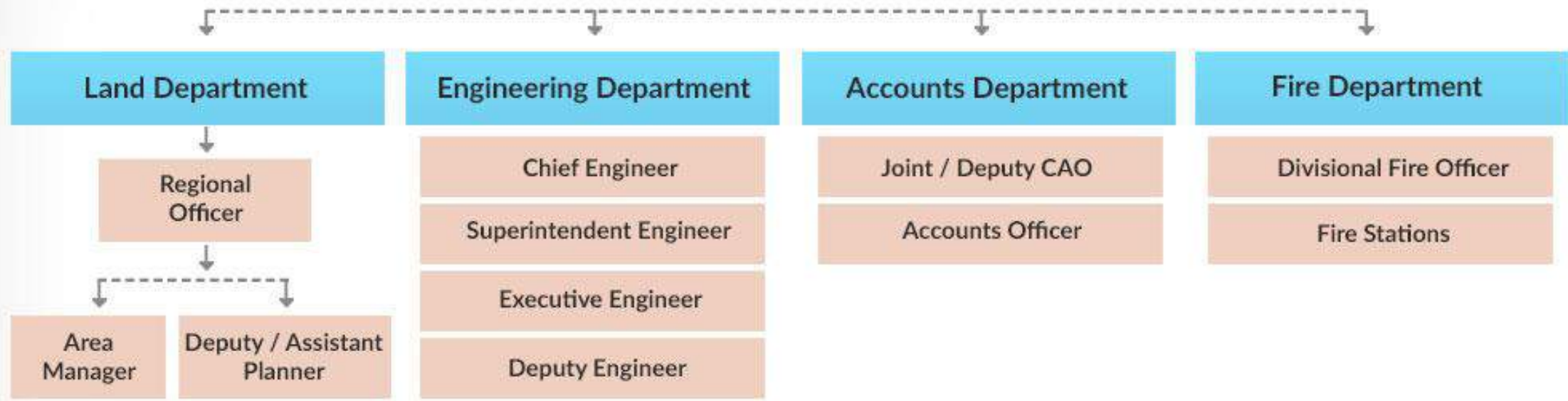
CEO

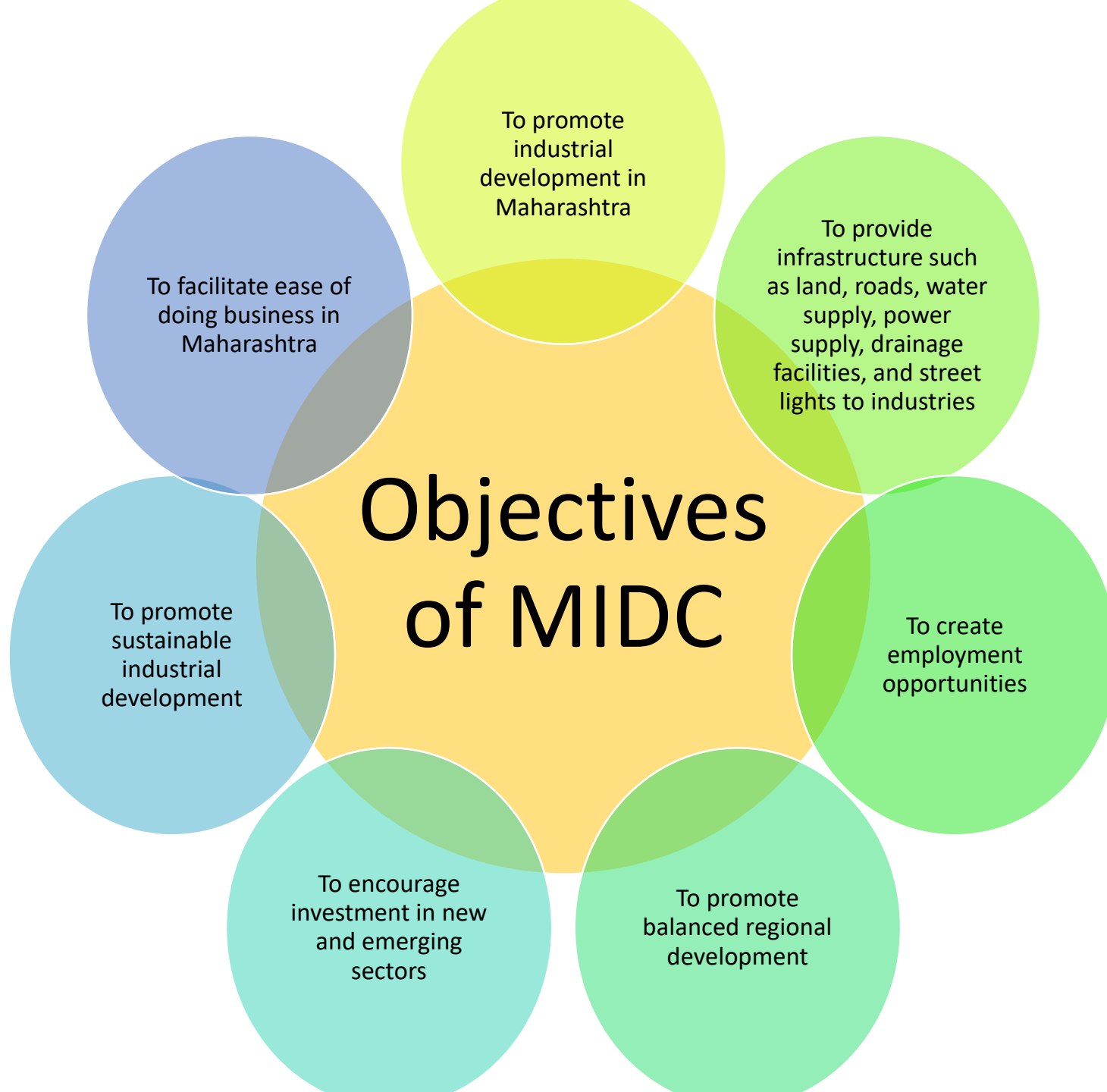
HQ



Field Offices

Field Offices





Objectives of MIDC

To promote industrial development in Maharashtra

To provide infrastructure such as land, roads, water supply, power supply, drainage facilities, and street lights to industries

To create employment opportunities

To promote balanced regional development

To encourage investment in new and emerging sectors

To promote sustainable industrial development

To facilitate ease of doing business in Maharashtra

Role of MIDC in Industrial Development

Provides infrastructure

MIDC provides infrastructure such as land, roads, water supply, power supply, drainage facilities, and street lights to industries. This helps to attract investment and create jobs.

Attracts investment

MIDC offers a variety of incentives to attract investment, such as fiscal incentives, non-fiscal incentives, and benefits for MSMEs. This helps to make Maharashtra a more attractive destination for businesses.

Promotes balanced regional development

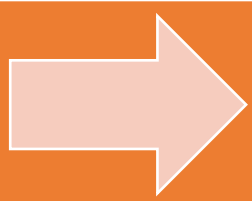
MIDC develops industrial areas in all parts of Maharashtra, including the backward and underdeveloped regions. This helps to create jobs and opportunities in all parts of the state.

Promotes sustainable industrial development

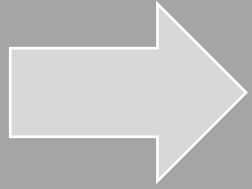
MIDC has a strong focus on sustainable industrial development and has implemented a number of initiatives to reduce the environmental impact of industries. This helps to ensure that industrial development is compatible with environmental protection.

Facilitates ease of doing business

MIDC has taken a number of steps to facilitate ease of doing business in Maharashtra, such as streamlining the land allocation process and providing online services. This helps to make it easier for businesses to set up and operate in the state.



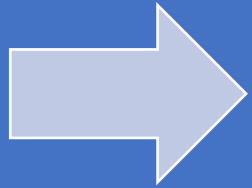
MIDC has developed over 289 industrial areas in Maharashtra, covering an area of over 2.25 lakh acres.



MIDC has provided land to over 160,000 industries, creating employment opportunities for over 10 million people.



MIDC has attracted investment worth over Rs. 10 lakh crore from domestic and foreign companies.



MIDC has developed industrial clusters in specific sectors such as automobiles, electronics, textiles and chemicals.



MIDC has promoted research and development in industries.



MIDC has created a favorable environment for industrial growth.

Infrastructure Development by MIDC

Land allocation

- MIDC provides land to industries in industrial areas. The land is allocated through a transparent and competitive bidding process.

Road connectivity

- MIDC develops roads and highways to connect industrial areas to other parts of the state. This helps to improve the transportation of goods and services.

Water supply

- MIDC provides water supply to industries through pipelines and tankers. The water is sourced from dams, rivers, and lakes.

Power supply

- MIDC provides power supply to industries through the grid. The power is generated from thermal power plants, hydroelectric power plants, and nuclear power plants.

Drainage facilities

- MIDC provides drainage facilities to industries to collect and dispose of wastewater. This helps to prevent pollution.

Sanitation facilities

- MIDC provides sanitation facilities to industries to collect and dispose of solid waste. This helps to prevent diseases.

MIDC 's Land Allocation

MIDC allocates land to industries through a transparent and competitive bidding process.

MIDC publishes a notice inviting applications for land allocation.

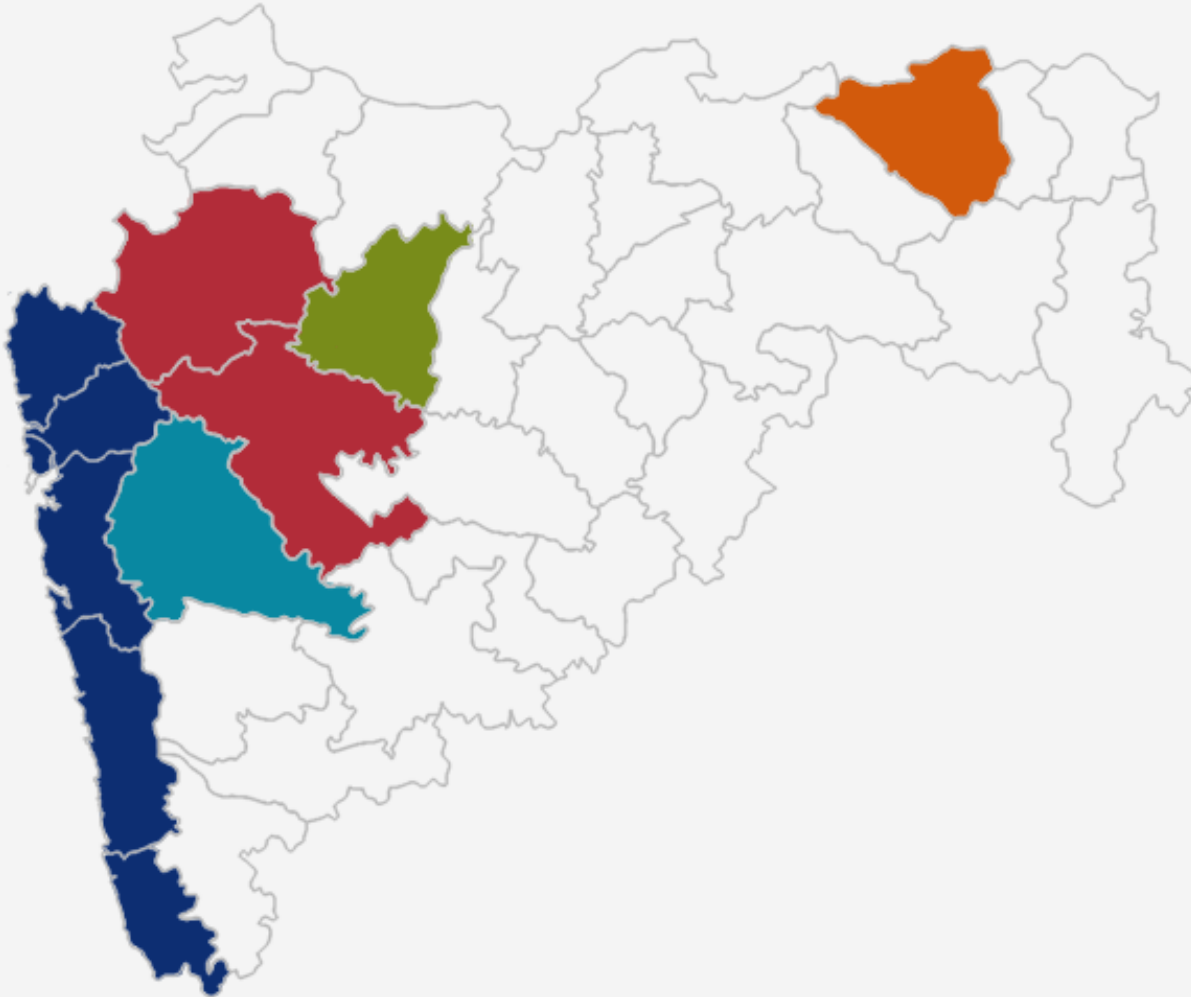
Interested companies submit their applications along with the required documents.

MIDC evaluates the applications and shortlists the eligible companies.

The shortlisted companies are invited to participate in the bidding process.

The bidding process is conducted online.

MIDC 's Land Bank



Mumbai-Thane-Raigad | 15,000 Acres Engineering | Food Processing | Auto & Components | Chemicals | Pharmaceutical |

Pune-Chakan-Talegaon-Satara | 8,000 Acres Data Centre | Gems & Jewelry | Engineering | Food Processing | Auto & Components | ESDM | Logistics

Nashik-Malegaon-Ahmednagar | 5,000 Acres Food Processing | Medical Equipment | ESDM | Engineering

Aurangabad (AURIC, DMIC)-Jalna | 8,000 Acres Food Processing | Auto & Components | ESDM | Textile

Nagpur - Amravati | 4,000 Acres Aerospace & Defence | Engineering | Textiles | Food Processing

Mumbai - Thane

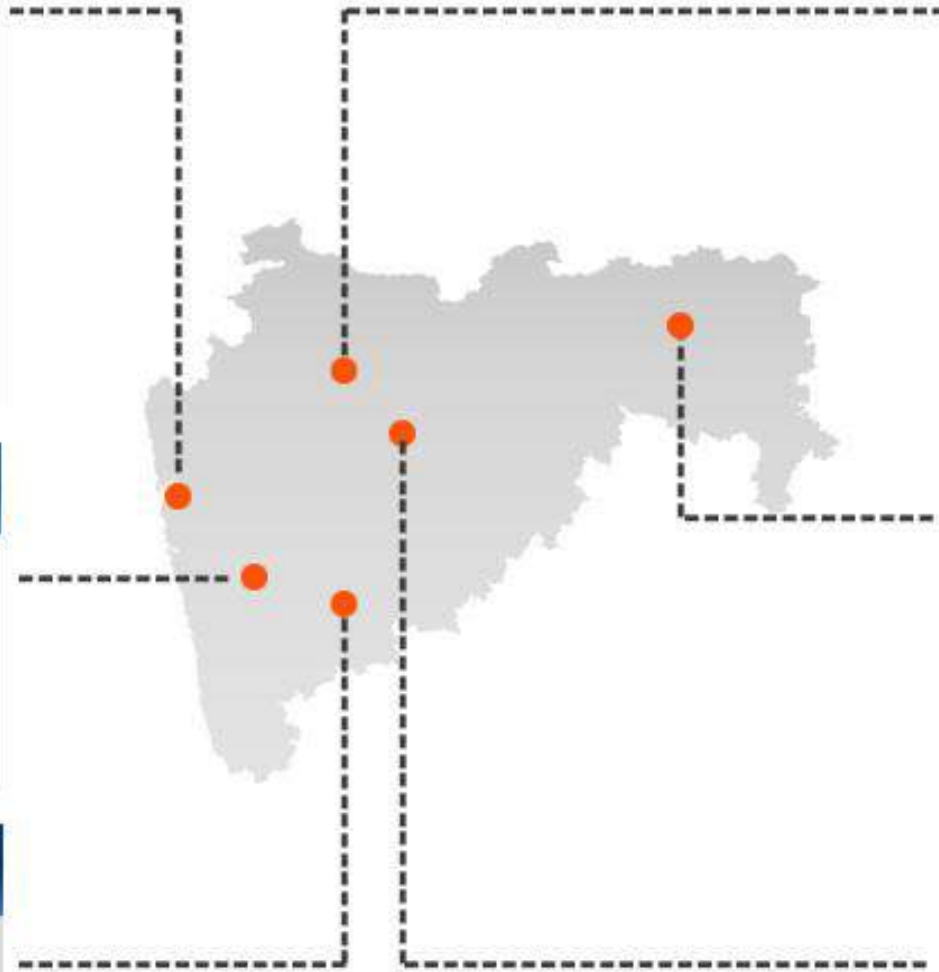
- Dighi
- Khalapur Ph 3
- Additional Taloja
- Tokrale
- Dapchari
- Mahad
- Khanloshi
- Adali

Pune

- Chakan Phase 5
- Talegaon Phase 4
- Ranjangaon Phase 3 (Karade)
- Ranjangaon Phase 3 (Saikrupa)

Kolhapur

- Additional Khandala Ph 2
- Additional Khandala Ph 3



Ahmednagar - Nashik

- Addl Supa parner Ph 1 & 2
- Jamner
- Additional Dindori
- Sinnar Malegaon Ph 1

Nagpur - Amravati

- Addl. Khamgaon
- Aarni
- Risod Industrial Area
- Addl. Katol
- Addl. Karanja
- Pobhurna

Aurangabad

- DMIC Aurangabad
- Vadgaon
- Kaudgaon Ph 3

Road Connectivity Projects by MIDC



The Mumbai-Pune
Expressway



The Nagpur-Mumbai
Super Expressway



The Delhi-Mumbai
Industrial Corridor
(DMIC)



The Navi Mumbai
International Airport
Expressway



The MIDC Road
Network
Development Project

Water Supply by MIDC



MIDC identifies the water sources that can be used for industrial water supply.

MIDC develops the water sources and builds the necessary infrastructure, such as dams, reservoirs, and pipelines.

MIDC treats the water to make it potable and suitable for industrial use.

MIDC distributes the water to the industries through a network of pipelines.

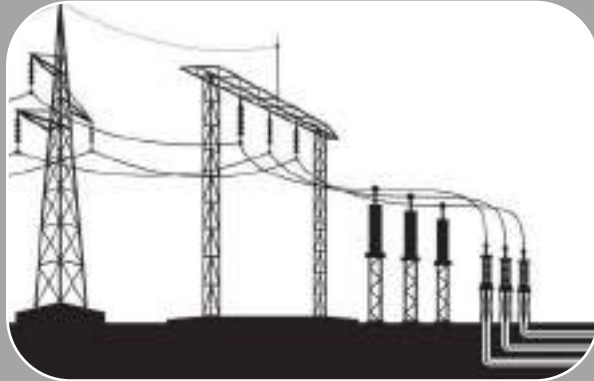
MIDC monitors the water quality and ensures that the water meets the required standards.

MIDC also provides water supply to industrial clusters through common effluent treatment plants (CETPs). CETPs treat the wastewater generated by the industries and recycle the water for reuse.

Power Supply by MIDC



MIDC enters into agreements with power generation companies to purchase power.



MIDC transmits the power to the industrial areas through the grid.



MIDC distributes the power to the industries through a network of transformers and substations.

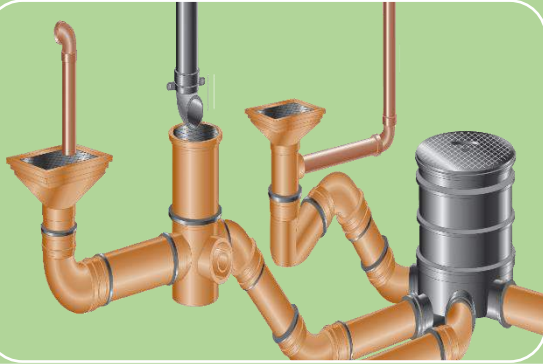


MIDC monitors the power supply and ensures that the industries have uninterrupted power supply.



Drainage Facilities by MIDC

MIDC provides drainage facilities to industries to collect and dispose of wastewater.



Underground drainage system:

- This system consists of a network of pipes that collect wastewater from the industries and transport it to treatment plants.



Septic tanks:

- Septic tanks are used to treat wastewater from small industries.



Effluent treatment plants (ETPs):

- ETPs treat wastewater from large industries and make it suitable for discharge into water bodies



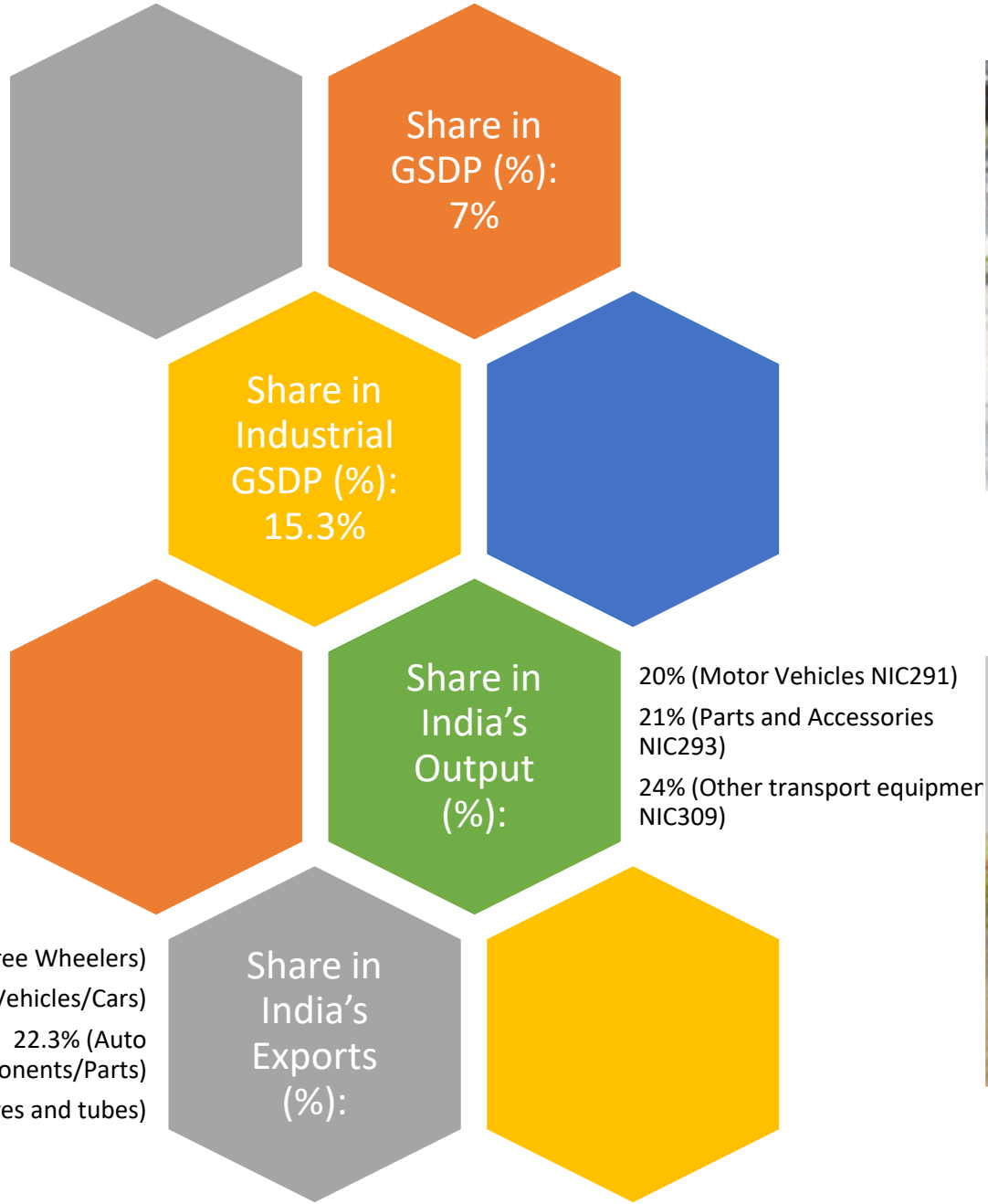
Common effluent treatment plants (CETPs):

- CETPs treat wastewater from multiple industries and make it suitable for reuse.

Thrust Sectors for MIDC



Automotive Sector in MIDC



Pune is the largest auto hub in India with more than 4000 manufacturing and ancillary units in Pimpri-Chinchwad region alone.



Automotive Research Institute of India, Pune – R&D, Testing and Certification Organization



Auto Cluster Development and Research Institute, Pune – Development of MSMEs for OEMs



Horiba India Technical Centre, Pune – Emission measurement systems and advanced analytical instruments.



**AUTOMOBILE &
AUTO COMPONENTS HUBS**

MAJOR AUTOMOBILE PLAYERS IN MAHARASHTRA



Mercedes-Benz



Audi



Volkswagen



JAGUAR



TATA MOTORS



ŠKODA



BAJAJ



Mahindra
Rise.



GOODYEAR



Jeep

BRIDGESTONE



CEAT

Electronics Sector in MIDC

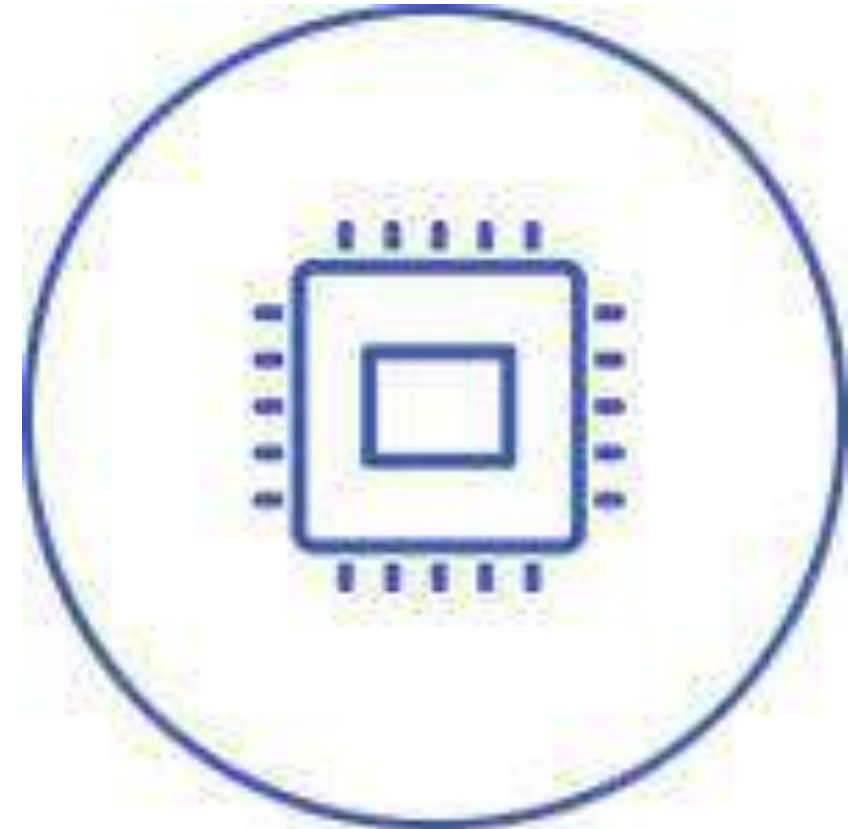
Share in GSDP (%): 3.2%

Share in Industrial GSDP (%): 6.4%

Share in India's Output (%):

22% (Electronic Components)
19% (Consumer Electronics)
20% (Domestic Appliances)
24% (Testing, Navigating and Control equipment)

Share in India's Exports (%): 2%*





MAJOR ELECTRONICS PLAYERS IN MAHARASHTRA



Haier

Schneider
Electric



Godrej

Honeywell



VIDEOCON

भारत इलेक्ट्रॉनिक्स
BHARAT ELECTRONICS

JABIL

QLOGIC

Qualcomm



PHILIPS

BOSCH

Food Processing Sector in MIDC

Share in GSDP (%): 7%

Share in Industrial GSDP (%): 15%

Share in India's
Output (%):

14% (Meat)

11% (Marine)

19% (Fruits and Vegetables)

13% (Oil)

16% (Dairy)

20% (Processed food items)

Share in India's Exports (%): 15%



Fruits

- Nashik,
- Ahmednagar,
- Pune,
- Satara,
- Solapur,
- Osmanabad

Jaggery Processed foods :

- Kolhapur,
- Pune,
- Satara

Fruits Processing :

- Pune,
- Aurangabad

Bakery Products :

- Mumbai,
- Jalna,
- Jalgaon

Prepared Foods :

- Dhule,
- Beed

Pulses Processing :

- Nagpur,
- Jalgaon

Beverages :

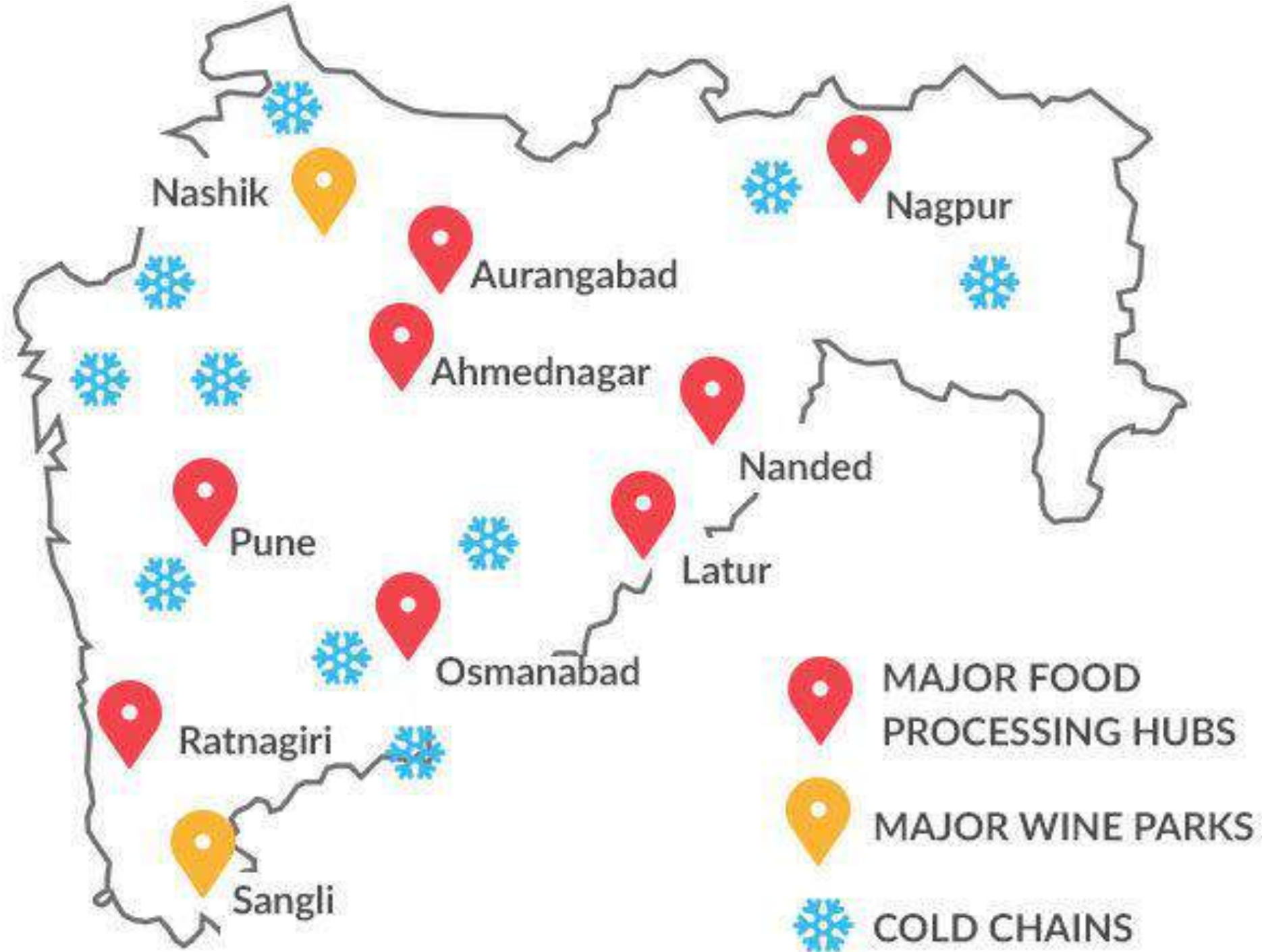
- Nashik,
- Raigad,
- Solapur

Fisheries :

- Thane,
- Raigad,
- Ratnagiri,
- Sindhudurg

Milk :

- Pune,
- Satara,
- Sangli,
- Nashik



MAJOR FOOD PROCESSING PLAYERS IN MAHARASHTRA

Parle Agro
refreshing India

MARS
incorporated

 **PEPSICO**

Sil
LIP-SMAKIN' GOODNESS

BRITANNIA
Eat Healthy. Live Better.


Schreiber.

Bisleri

MORDE

FERRERO


Hindustan Unilever Limited


ITC Limited

Cargill

McCain

Godrej

Mondelēz
International

MOTHER DAIRY

 **General Mills**
Making Food People Love

Venky's

BARRY CALLEBAUT


RALLIS
A TATA Enterprise

Kellogg's

SUGUNA FOODS

Agro Tech Foods Limited

 **SULA**
VINEYARDS

Bavli

MTR


PARAG

Allana
—since 1985—

Textile Sector in MIDC

Share in GSDP (%): 2.9%

Share in Industrial GSDP (%): 6.2%

Share in
India's
Output (%):

10% (Spinning & Weaving of
textiles NIC131)

12% (Wearing Apparel NIC141)

8% (Other Textiles NIC139)

Share in India's Exports (%): 16%*





MAJOR TEXTILE PLAYERS IN MAHARASHTRA

Raymond



Siyaram's



BOMBAY DYEING



Spentex Industries Limited



KKCL KEWAL KIRAN CLOTHING LIMITED

Nagreeka®



BIRLA COTSYN (INDIA) LTD.



ZODIAC FINEST QUALITY CLOTHING

Pharmaceuticals Sector in MIDC

Share in GSDP (%): 6.5%^

Share in Industrial GSDP (%): 14.5%^

Share in India's
Output (%):

17% (Pharmaceuticals NIC21)

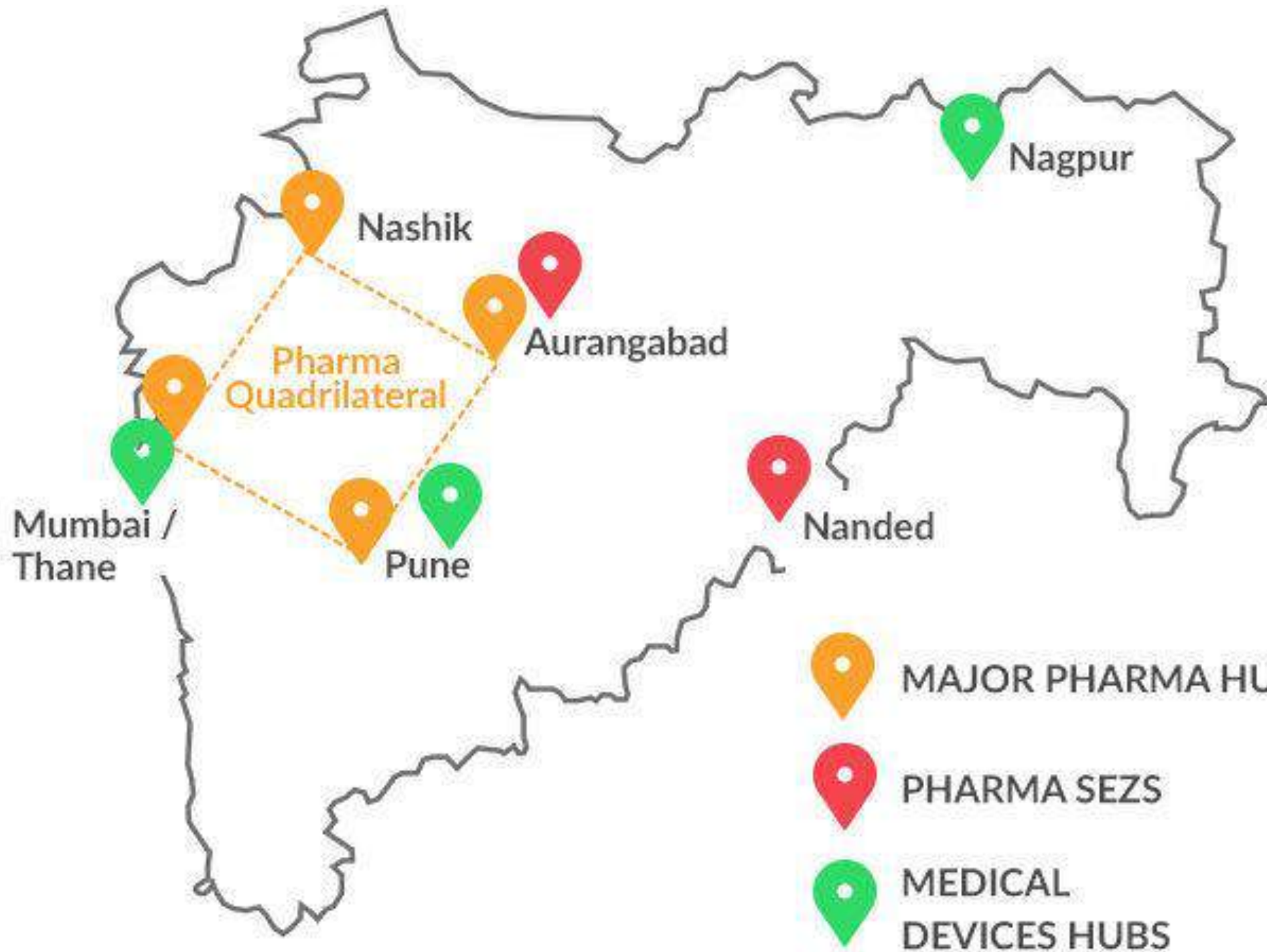
16% (Medical Devices NIC325)

Share in India's
Exports (%)

20% (Pharmaceuticals)*

22% (Medical Devices)





MAJOR PHARMACEUTICALS PLAYERS IN MAHARASHTRA



Chemical Sector in MIDC

Share in GSDP (%): 6.5%

Share in Industrial GSDP (%): 14.5%

Share in
India's Output
(%):

22% (Pesticides, agrochemicals & other chemicals
NIC202)

17% (Other Chemicals NIC2008)

13% (Basic Chemicals NIC201)

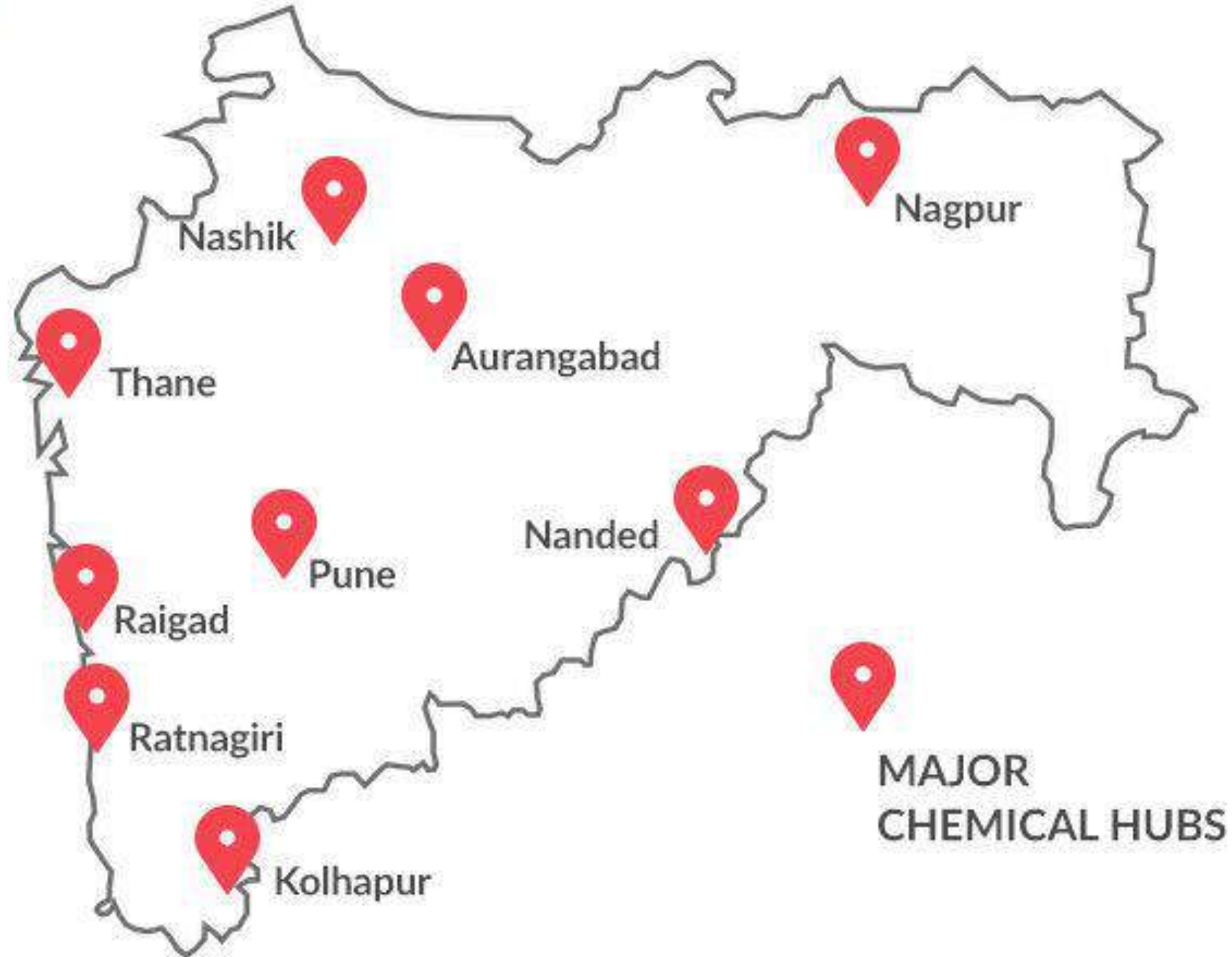
Share in
India's Exports
(%)

25% (Fertilizers)

18% (Organic Chemicals)

12% (Inorganic Chemicals)





MAJOR CHEMICAL PLAYERS IN MAHARASHTRA



Information Technology Sector in MIDC

Share in GSDP (%): 25.7% (Average during 2011-12 and 2018-19)

Growth rate (%): 7% (2018-19)

Share in India's Exports (%): 20%*

MIDC Presence: Developed 37 public IT parks which are functioning in the State with an investment of about INR 18,000 crore and about 2.68 lakh employment





MAJOR INFORMATION TECHNOLOGY PLAYERS IN MAHARASHTRA





Single Window Clearance

[Home](#)

List of services which can be availed online.

MIDC SERVICES

Land Department- Services

Fire Department- Services

Engineering - Water Department- Services

Engineering - Drainage Department- Services

Engineering - Power Department- Services

SPA Department- Services

Technical Advisor Department- Services

IT SEZ Department- Services

MIDC SERVICES

Land Department- Services



Timelimit Extension for Obtaining OC	Application for Extension of Time Limit for obtaining OC	30 Days
Mortgage Consent	Application for Mortgage Consent	7 Days
Final Lease	Application for Final Lease	10 Days
Plot Transfer	Application for Transfer of Plot	30 Days
Change in Company Name	Application for Change in Name of Company	30 Days
Plot Sub-letting	Application for sub-letting of Plot	8 Days
Plot Sub-leasing	Application for sub-leasing of Plot	22 Days
Plot Sub-division	Application for sub-division of Plot	30 Days
Predetermined Lease	Application for Predetermined Lease	10 Days
Plot Amalgamation	Application for Plot Amalgamation for waiver of Marginal Distance	30 Days
Change in Activity	Application for Change in Activity	21 Days
Change in Land Use	Application for Change in Land Use	30 Days
Surrender of Plot	Application for Surrender of Plot & Refund	34 Days
Duplicate allotment order	Application for Duplicate allotment order	15 Days
Allotment After Death	Plot Allotment After Death	15 Days

MIDC SERVICES

Land Department- Services

Fire Department- Services

Final Fire NOC	Application for Final Fire Approval	15 Days
Renewal of Fire NOC	Application for Renewal of Final Fire NOC	15 Days
PNG Provisional Fire Approval	Application for PNG Provisional Fire Approval	15 Days
PNG Final Fire Approval	Application for PNG Final Fire Approval	15 Days

Engineering - Water Department- Services

No-Dues Certificate	Application for No Dues Certificate	7 Days
New Water Connection	Application for Water Supply Connection	15 Days
Change in Water Supply Connection Size	Change in Water Supply Connection Size	15 Days
Consumer Name Change	Application for Change in Consumer Name	15 Days
Water Meter Testing	Application for Water Meter Testing	15 Days

Engineering - Drainage Department- Services

Drainage Connection	Application form for Permission for Drainage Connection	21 Days
---------------------	---	---------

SPA Department- Services 		
Tree Felling/Trimming/Replantation	Application for Felling/Trimming/Re-plantation of Trees	60 Days
Combined Plan Approval	Combined Application for Building Plan Approval and Provisional Fire NOC	30 Days
Intimation Plinth Completion	Application for Intimation of Plinth Completion	7 Days
Occupancy Certificate	Application for Occupancy Certificate	8 Days
Application for stacking of building material & debris	Application for stacking of building material & debris	8 Days
e-Intimation for Commencement of work	e-Intimation for Commencement of work	0 Days
Right of Way	Application for Right of Way Permission(Laying OFC/Gas/Electric Connectivity)	21 Days
Letter Of Intent	Application For Letter Of Intent	15 Days
Technical Advisor Department- Services 		
Lol & Registration - IT Software/IT Services	Application for LOI & Registration of IT Software/ IT Services Unit	10 Days
Lol & Registration - IT Hardware	Application for LOI and Registration of IT Hardware Unit	10 Days
IT SEZ Department- Services 		
Co-Developer Status	Application for Co-Developer Status	30 Days



Government of Maharashtra

Electronics Policy 2016

Operative Period 01-04-2016 to 30-09-2023

Electronics System Design & Manufacturing (ESDM)

Maximum Benefits from Maharashtra Government

For Electronic Manufacturing Units



of Capital
Expenditure

MAHARASHTRA Electronics Policy 2016

Calculation of Subsidy

Capex	-	Rs. 100 Cr
Subsidy @ 100%	-	Rs. 100 Cr
Eligible Subsidy	-	Rs. 100 Cr
No. of Years	-	10 Years
Per Annum Subsidy	-	Rs. 10 Cr

Disbursement Mode

SGST Refund

Interest Refund

Power Tariff Subsidy

What is included in Capital Expenditure

- **Factory Land**
- **Factory Building**
- **Plant And Machinery**
- **Electric Installation**
- **Other Fixed Assets**

Erected and Installed in factory premises

Criteria for Mega Projects :-

A & B Area Pune / Mumbai	Other Than A & B Area Other Than Pune / Mumbai
<ul style="list-style-type: none">• Fixed Capital Investment = or < 250 Cr.or• Employment = or > 500 People	<ul style="list-style-type: none">• Fixed Capital Investment = or > 100 Cr.or• Employment = or > 250 People

BASKET OF INCENTIVES FOR ELECTRONICS MANUFACTURING UNITS-

- 1. INDUSTRIAL PROMOTION SUBSIDY (IPS) - SGST Refund**
- 2. INTEREST SUBSIDY**
- 3. POWER TARIFF SUBSIDY**
- 4. EXEMPTION FROM ELECTRICITY DUTY**
- 5. WAIVER OF STAMP DUTY**

BASKET OF INCENTIVES FOR ELECTRONICS

MANUFACTURING UNITS-



Basket Product - 1

INDUSTRIAL PROMOTION SUBSIDY (IPS)

- Eligible New or Expansion Units will be eligible for IPS Subsidy

SGST Refund to eligible Units

BASKET OF INCENTIVES FOR ELECTRONICS

MANUFACTURING UNITS-

Basket Product - 2

INTEREST SUBSIDY



- Eligible **New or Expansion** Units will be eligible for Interest subsidy in respect of interest actually paid to the Bank and Public Financial Institutions
- Interest Refund @ 5 % p.a.
- Minimum 7% p.a. is to borne by the Unit.
- Overall Ceiling of the interest subsidy shall be up to the Quantum of SGST collected during that year

BASKET OF INCENTIVES FOR ELECTRONICS

MANUFACTURING UNITS-

Basket Product - 3

POWER TARIFF SUBSIDY

- Eligible **NEW** ESDM units will be eligible for power tariff subsidy
- Rs. 1/- per unit for a period of 3 years in category A and B areas
- 5 years in other parts of state
- subject to ceiling of Yearly Cap

BASKET OF INCENTIVES FOR ELECTRONICS MANUFACTURING UNITS-

Basket Product - 4

EXEMPTION FROM ELECTRICITY DUTY

- Eligible **NEW** ESDM units will be exempted from paying Electricity Duty.
- The exemption will be for period of 15 years.

BASKET OF INCENTIVES FOR ELECTRONICS

MANUFACTURING UNITS-

Basket Product - 5

WAIVER OF STAMP DUTY



- Eligible ESDM units will be exempted from payment of stamp duty during the investment period.
- Stamp Duty will be waived for **ACQUIRING LAND** and for **TERM LOAN** Purpose.
- Units shall be required to submit NOC from competent Authority of Directorate of Industries.

INCENTIVES FOR STRENGTHENING MSME's

- 25% one time subsidy on capital equipment for **TECHNOLOGY UP - GRADATION**, limited to Rs. 25 lakh.
- 25% one time subsidy on capital equipment for **CLENER PRODUCTION** measures, limited to Rs. 5 lakh.
- 75% subsidy on the expenses incurred for **PATENT REGISTRATION** limited to Rs.10 lakh for national patents and Rs. 25 lakh for the international patents.

- Assistance for a maximum of three industry standard quality certifications, at a rate of 50% of cost of quality certification within the overall ceiling of Rs. 6 lakh in 5 years. The amount of assistance will include :
 - i) Fees charged by certification agency.
 - ii) Consulting fees and training charges.
 - iii) Cost of testing equipment as suggested by BIS.
 - iv) Calibration charges of equipment.
- 75% of the cost of carrying out **CREDIT RATING** by Small Industries Development Bank of India/Government accredited Credit Rating agency, limited to Rs. 50,000

GB
Modi

CA

CA G.B.MODI

gbmodi@hotmail.com

*Thank
you*